

Kalekeiuk Mpwa



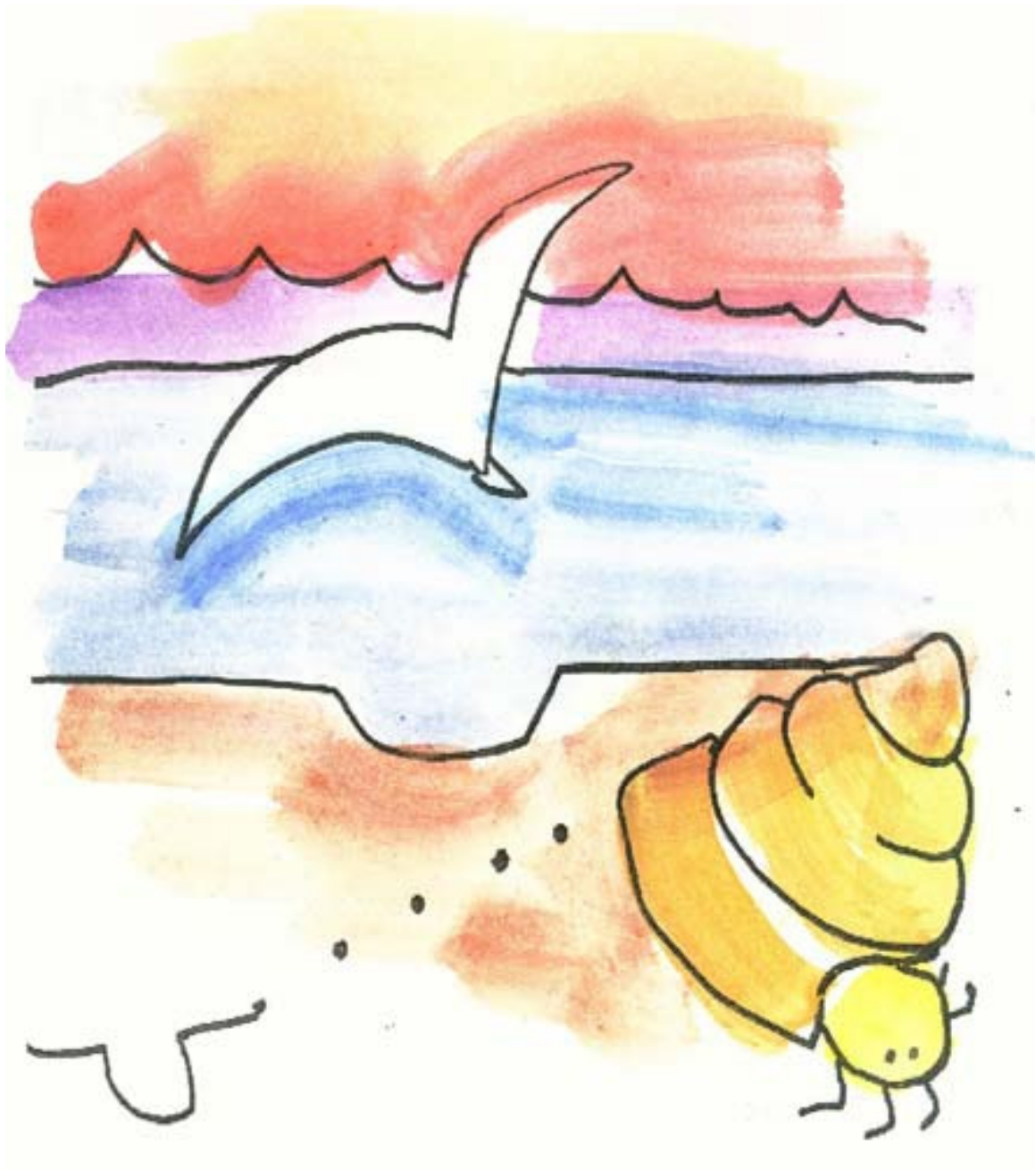
Ntingda sang rehn: Lee Noto
Mahlenda sang rehn: Lori Phillips



Mpwa kin kerepseli pohn pihk ni oaroahro. E kin kerep weirseli pwoahr pohn pihko ah wasahn rokila.



Kupwur ahpw pihrho pohn pihko. E inenen duhpek.
Kupwur ahpw tehkada me mpwa kihh kerepseli nan
pihko. E kin kohsang nan ehu pwoahr kolahng nan
ehu. Kupwur ahpw lemehda me ma e pahn ekis awih
e pahn lusukete kangala mpwa, pwe mpwa inenen
mas iou.



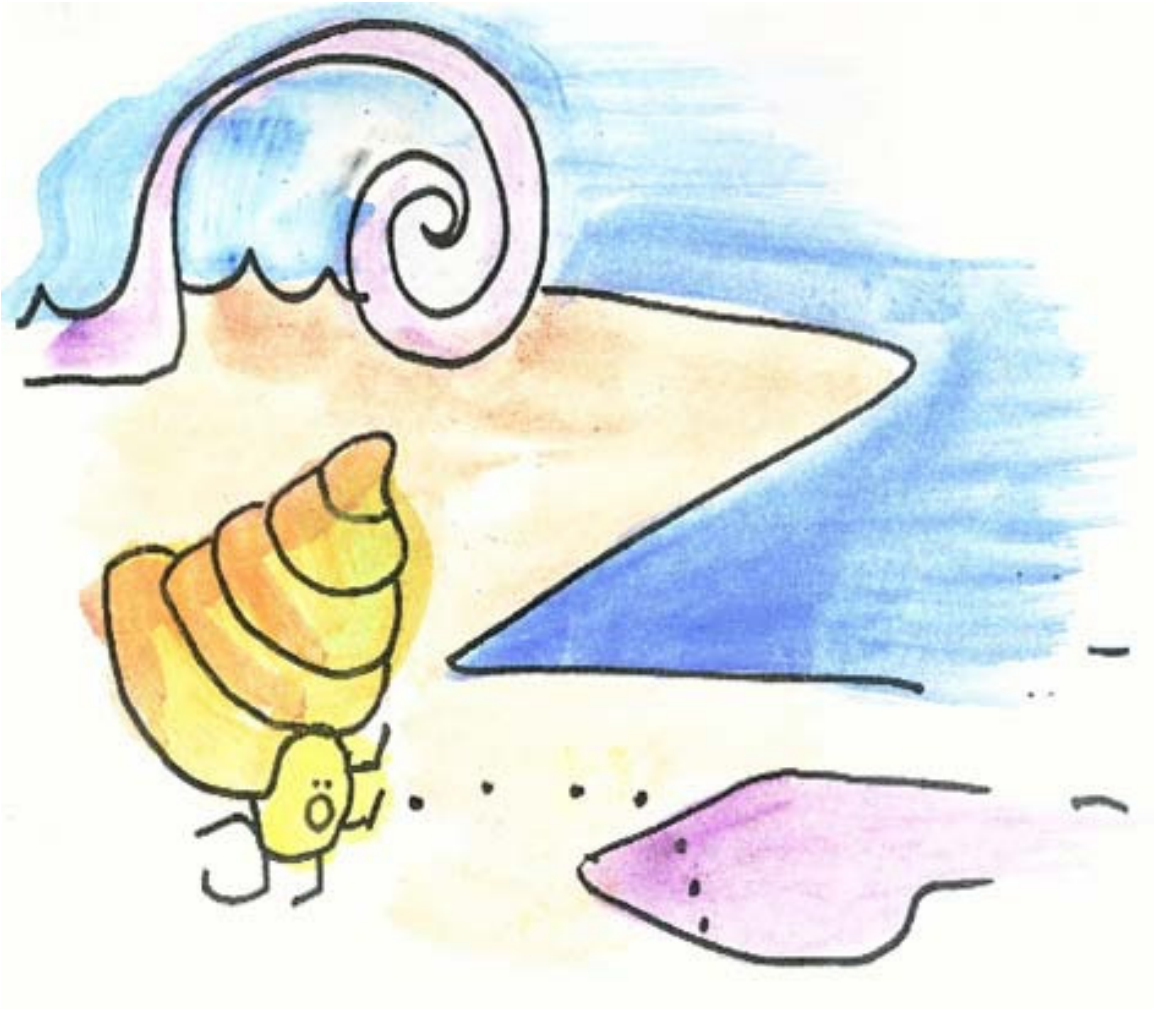
Mpwa ahpw pwarada oh kerekerepla nan pihko. E sasairiki me Kupwur rokirokih oh miher powe. Kupwur ahpw dikauih.

Kalekeiuk Mpwa!



Mpwa luste sopohlong nan ehu pwoahr pitila. Kupwur inenen pahtou oh pipihrla.

Mpwa pitila.



Mpwa pil pwarada oh kerekerepla ni keilen pihko. E sasairiki me lapalahn ilok ieu kereniongehr en sawa pohn pihko.

Kalekeiuk Mpwa!



Ekis tikitik mwohn ah pahn sawa, mpwa luste tenge
nan ehu pwoahr.

Mpwa pitila.



Mpwa ahpw pil pwarada oh kerepla pahn nih pwoat nan pihko. E sasairiki me mwasang ieu kereniongehr en pwopw.

Kalekeiuk Mpwa!



Mwohnte mwangaso ah pwopw, mpwa luste tenge
nan ehu pwoahr.

Mpwa pil pitila.



Rahno Mpwa diar kahpwal tohto kahrehiong ah inenen pwangada. Ahpw diarada pwoahr kalaimwun ehu ih eri pwedilong loale rokila koammoal. Eri met e wie rokirok koamkoamoal nan pwoahro nan pihko.

This book is part of a series of Pacific language early readers developed by Pacific Resources for Education and Learning (PREL).

We would like to thank the following people for their assistance in developing this set of early reading materials.

Acknowledgements

Pohnpeian

Translated by: Rod Mauricio

English

Author: Lee Noto

Illustrator: Lori Phillips



Pacific Resources for Education and Learning

900 Fort Street Mall Suite 1300 Honolulu, Hawai'i 96813

Phone: (808) 441-1300 Fax: (808) 441-1385

U.S. Toll-free Phone: (800) 377-4773

U.S. Toll-free Fax: (888) 512-7599

Email: askprel@prel.org Website: www.prel.org

Building Capacity Through Education

This product was funded by the U.S. Department of Education (U.S. ED) under the Regional Educational Laboratory program, award number ED01CO0014. The content does not necessarily reflect the views of the U.S. ED or any other agency of the U.S. government.

© copyright PREL 2006