

Taran Inkacweng



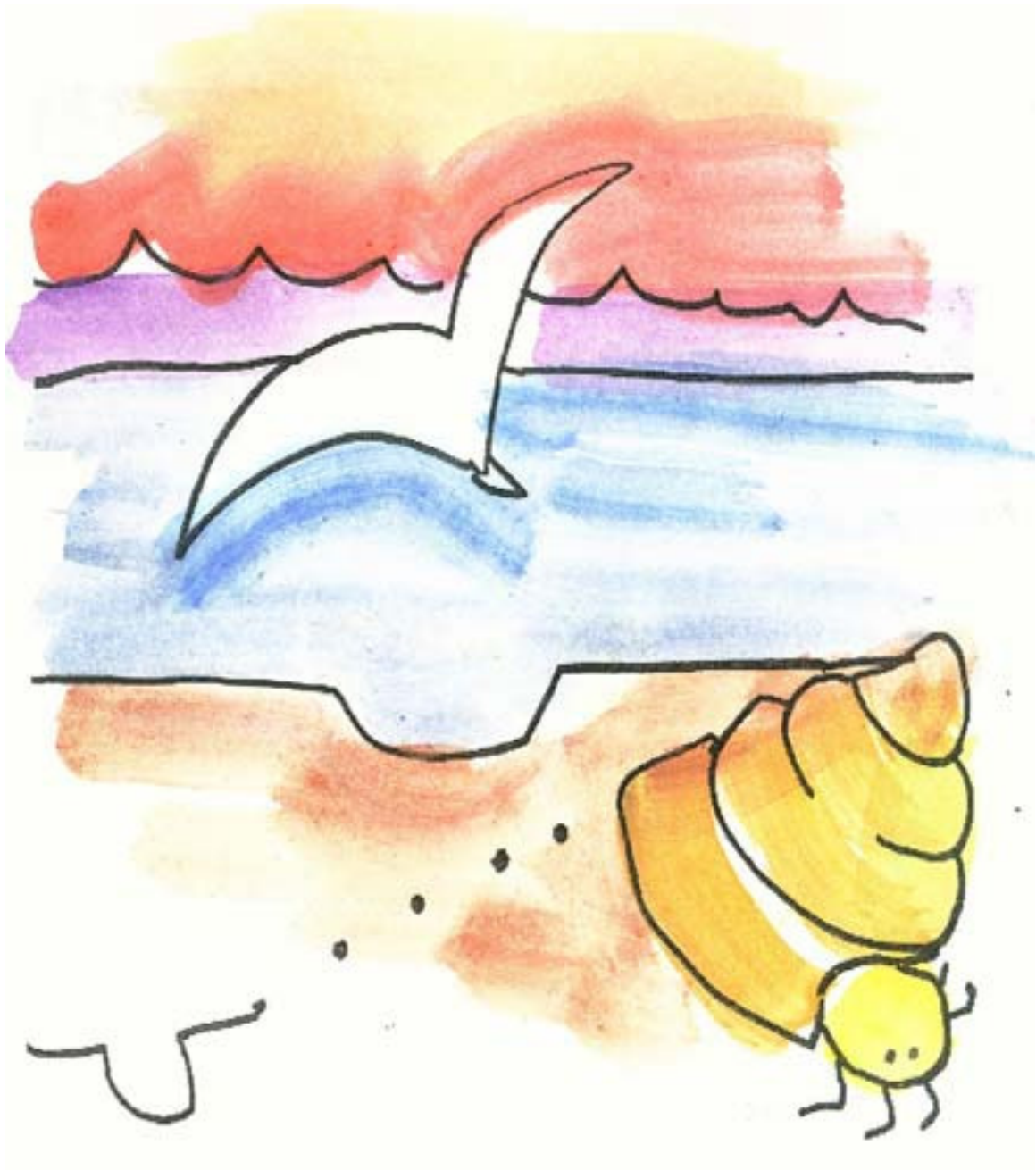
Sihmlac sel: Lee Noto
Sroleyucklac sel: Lori Phillips



Inkacweng el kahkahsrihk orahk lihkihnpot ah. Ke el orahk, el puhkanwack lohf ke puhpuhk ah.



Won luhlaph se sohk lihkihnpot ah. El arulacna masrinsracl. Won sac lohacng ke Inkacweng el orahkyang nuh in lohf ac orahklac liki lohf ke puhkpuhk ah. El nuhnkuh muh fin el tuhpan kuhtuhsrihk, sahp el ac eis mongo infulwacnlwen na yuc se.



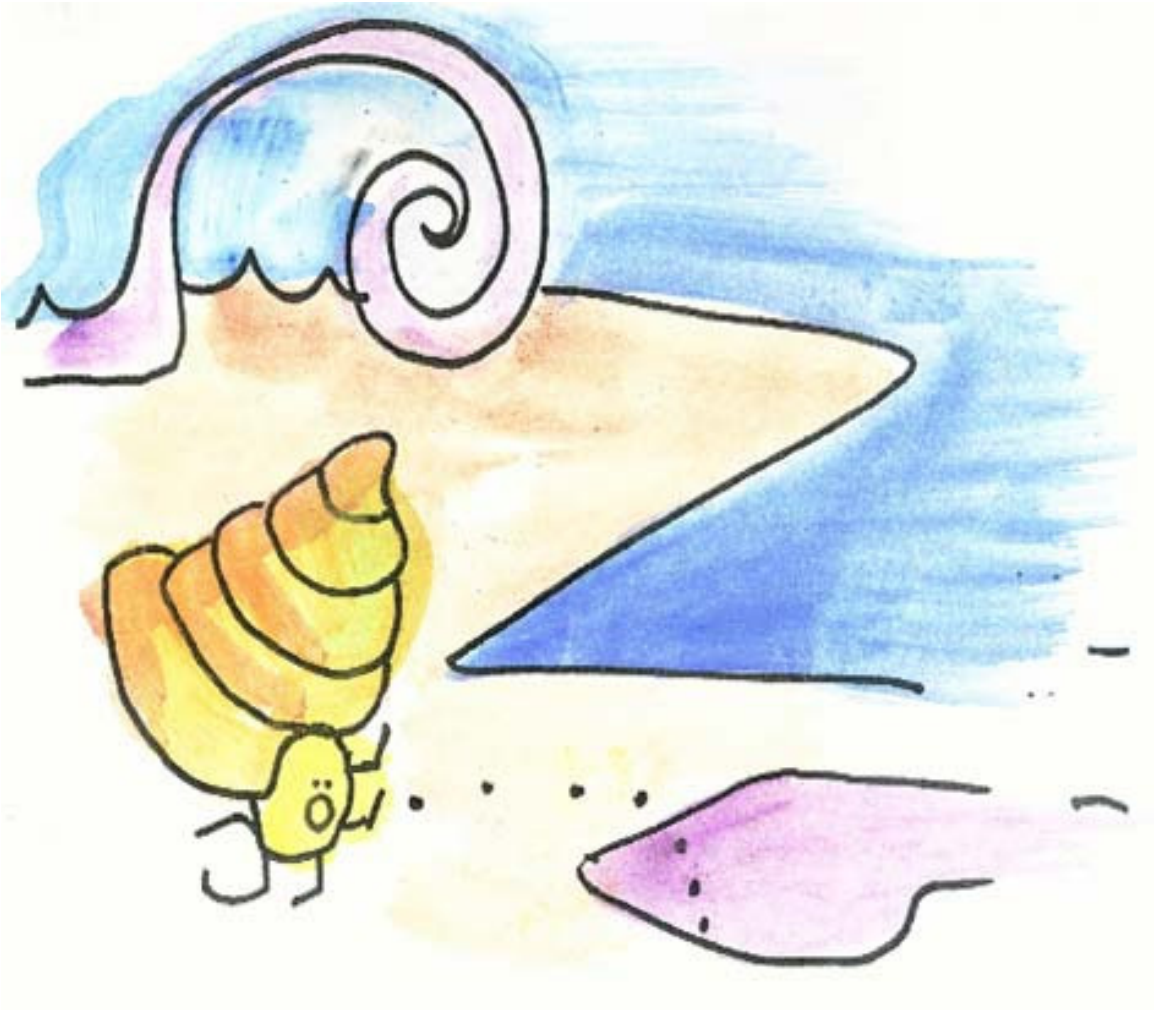
Inkacweng el tuhkuh liki loh f ke puhpuhk ah ac orahk lihkihnpot ah. El tiac na liac Won lucng. Won el suhlahklahk na puhtati nuh ten.

Taran Inkacweng!



Inkacweng el pihsrpihsr na yucyang nuh in loh se.
Won el suhpwacrlac ac sohklah.

Inkacweng el painmoullac.



Inkacweng el tuhkuh liki lohf ah a orahklac nuh pe kof ah. El tiac na lie noa na luhlahp se apkuhran in toki.

Taran Inkacweng!



Ke na pacl se noa sac toki ac, Inkacweng el irpiht na sahsacng nuh in lohf se.

Inkacweng el painmoullac.



Inkacweng el tuhkuh liki lohf ke puhkpuhk ah ac orahk lihkihnpot ah. El tiac na lie lah kaki se apkuhran in puhtatlac.

Taran Inkacweng!



Ke na pacl se kaki sac kihm infohk ah, Inkacweng el sa na kahinglac nuh in lohf se.

Inkacweng el painmoullac.



Lwen na elyah se nuh sel Inkacweng. Tiac paht el konacack acn na wo se ma wihklac liki mwe sensen. Ne ke pacl se inge, el painmoul in lohf srihsrihk se ke lihkihnpot ah.

This book is part of a series of Pacific language early readers developed by Pacific Resources for Education and Learning (PREL).

We would like to thank the following people for their assistance in developing this set of early reading materials.

Acknowledgements

Kosraean

Translated by: Winton Clarence and Keti Williams

Reviewed by: Winton Clarence and Keti Williams

English

Author: Lee Noto

Illustrator: Lori Phillips



Pacific Resources for Education and Learning

900 Fort Street Mall Suite 1300 Honolulu, Hawai'i 96813

Phone: (808) 441-1300 Fax: (808) 441-1385

U.S. Toll-free Phone: (800) 377-4773

U.S. Toll-free Fax: (888) 512-7599

Email: askprel@prel.org Website: www.prel.org

Building Capacity Through Education

This product was funded by the U.S. Department of Education (U.S. ED) under the Regional Educational Laboratory program, award number ED01CO0014. The content does not necessarily reflect the views of the U.S. ED or any other agency of the U.S. government.

© copyright PREL 2006