

# Bo Mkerekiki, e Chum



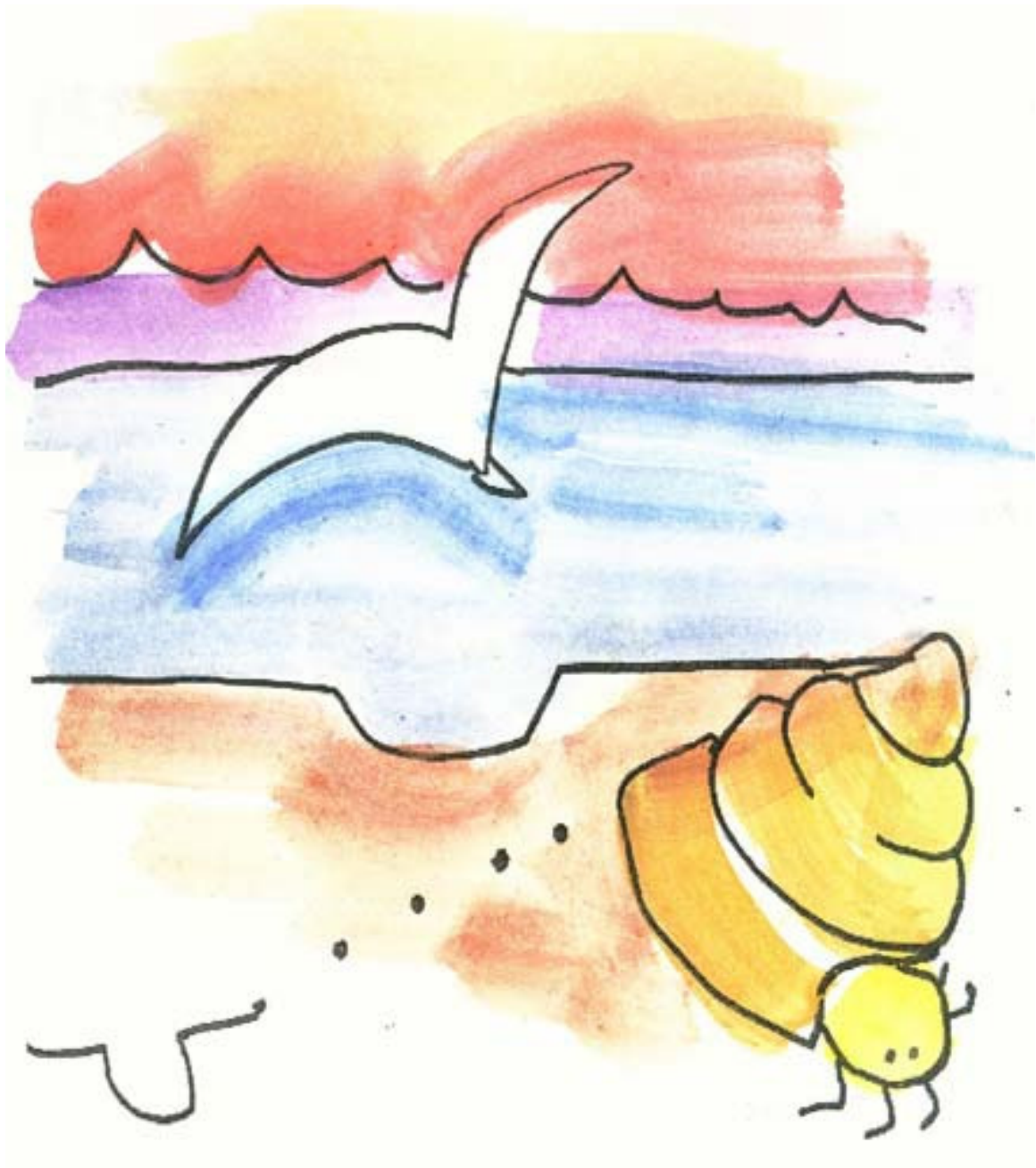
Lilechesii: Lee Noto  
Uluusunga: Lori Phillips



A Chum a milekokil el millekesako, e ulemibais er a kederang. Se er a lolekesako, e ng milengiis er a rolel el mo tmuu e me tuobed er a kliokl er a chelechol.



A klou el Charm a silebek er a bebul a kederang. Ng mera el mle songerenger. A Charm a ulemes er a Chum el melekesako el mo tmuu e me tuobed er a kliokl er a chelechol. Ng millebedebek el omko ng mengiil el telkib, e ng locha mo er ngii a ungil el sueleb er ngii.



A Chum a tilobed er a kliokl e millekesako el melemolem er a kederang. Ng dimlak lesa a Charm el ngar er a bebul. A Charm a di mle mereched el suebek el oldengelel.

**Morech er kau e Chum!**



A Chum a mle mereched el chemiis el dmuu er a kliokl er a chelechol. A Charm a mlo chetil me ng silebek el remiid.

A Chum a silobel.



A Chum a tilobed er a kliokl e millekesako el okiu a tkul a kederang. Ng dimlak lesa a klou el iull el mocha obuu kung er a chelechol.

**Morech er kau e Chum!**



Tia er a lebochu lobuu a iull er a chelechol, e a Chum  
a di mle mereched el remurt el tmuu er a kliokl er a  
chelechol.

A Chum a silobel.



A Chum a mle tuobed er a chelechol e millekesako el melemolem er a kederang. Ng dimlak lesa a kedolls el metau el robetang.

**Morech er kau e Chum!**





A uchei er a lesbechii er a chelechol tia el metau, e a Chum a mle mereched el chemiis el soiseb er a kliokl er a chelechol.

A Chum a silobel.



Tia kmal mle meringel el sils er a Chum. Ng dimle telkib e ng metik er a ungilbesul el basio el cheroid er a kengaol. Chelechang, e ng selbechakl el ngar er a chelsel a kekerei el kliokl el ngar er a kederang.

This book is part of a series of Pacific language early readers developed by Pacific Resources for Education and Learning (PREL).

**We would like to thank the following people for their assistance in developing this set of early reading materials.**

**Acknowledgements**

**Palauan**

**Translated by: Ebil Ruluked  
Reviewed by: P. Kemphis Mad**

**English**

**Author: Lee Noto  
Illustrator: Lori Phillips**



**Pacific Resources for Education and Learning**

900 Fort Street Mall Suite 1300 Honolulu, Hawai'i 96813

Phone: (808) 441-1300 Fax: (808) 441-1385

U.S. Toll-free Phone: (800) 377-4773

U.S. Toll-free Fax: (888) 512-7599

Email: [askprel@prel.org](mailto:askprel@prel.org) Website: [www.prel.org](http://www.prel.org)

*Building Capacity Through Education*

This product was funded by the U.S. Department of Education (U.S. ED) under the Regional Educational Laboratory program, award number ED01CO0014. The content does not necessarily reflect the views of the U.S. ED or any other agency of the U.S. government.

© copyright PREL 2006