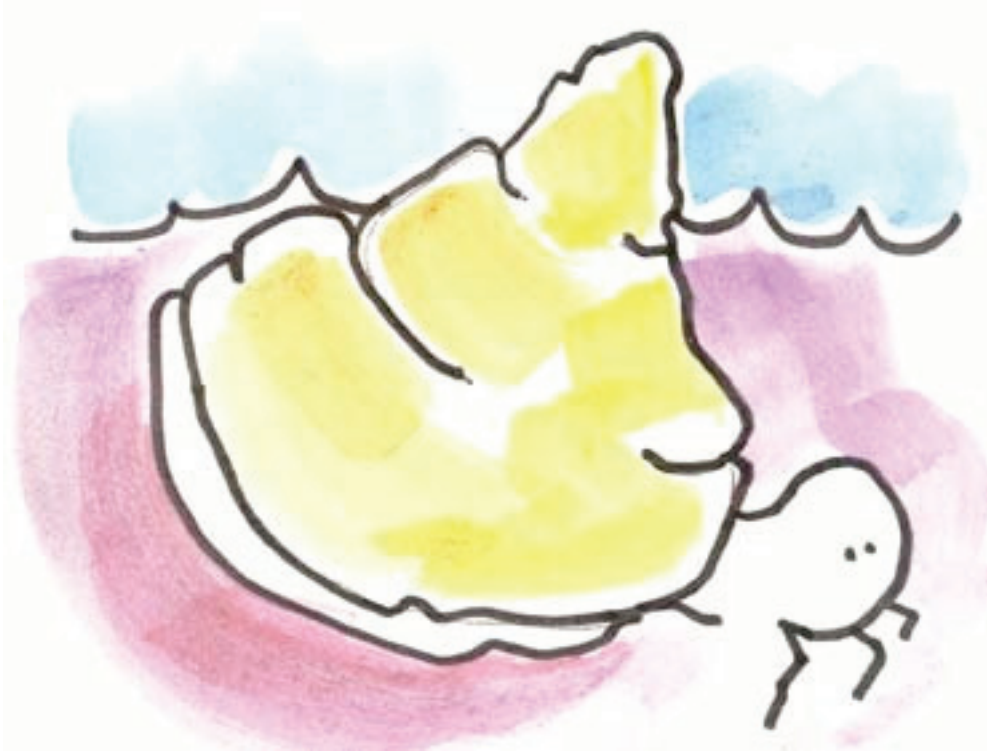


Lale!!



Rijeje: Lee Noto
Ripija: Lori Phillips



Baru eo eaar etōbalbal ionn kappe. Eaar etōbalbal ak ej kōb im bukōt kilen an duoj deloñ ilo rōñ ko ionn bok.



Juon bao kilelep eaar kātōk ion tok. Elap an kōle. Bao eo eaar reilaltak im lale an baru eo etōtalbal im walōñ walaļ ilo roñ ko ion bok. Eaar kōļmanokijen ke elañe enaj bar kōttar jidik, emaroñ wōr an mōñā in raļlep.

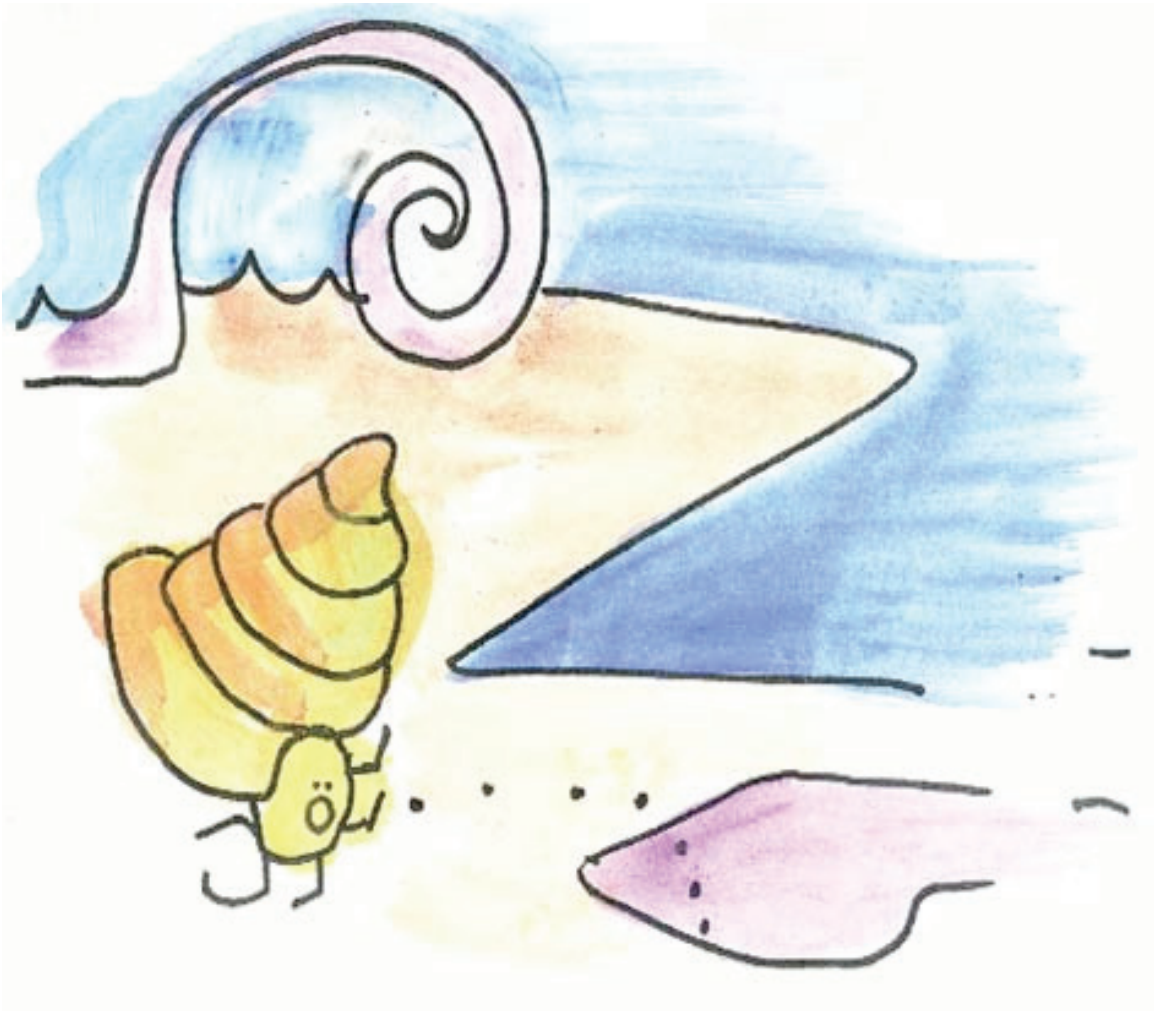


Baru eo eaar waloktok jen roñ eo ion bok im tōbal maanlok wōt. Eaar jab mejōke bao eo iļōñin. Bao eo eaar buul im kālōļtak.

Lale bao ñe!



Baru eo eaar buul n̄an loan rōn eo. Bao eo eaar jab mōḡōḡō im eaar kālok im etal. Eaar aineman baru eo.



Baru eo eaar waloktok jen rōñ eo im tōballōk tōrerein barijet.
Eaar jab mōjōke ño kilelep eo ebaj lukiti.

Lale ño kilelep ñe!



Ke ɲo eo eaar bojak in tōbar āne, baru eo emōj an buul im
deloñ iloan juon roñ.
Baru eo eaar koɲ im aineman.



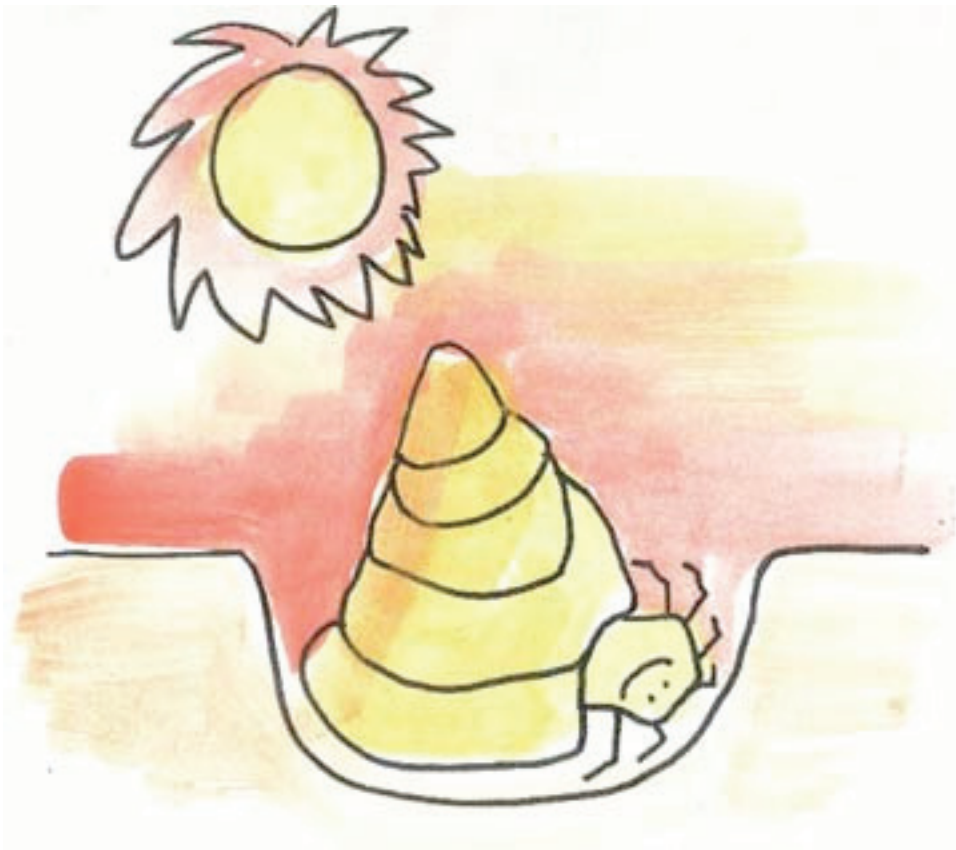
Baru eo eaar waloktok jen roñ eo im tōbalbalok iion bok ko.
Eaar jab mōjōke juon waini kilelep ebojak in wōtlok jen raan
ni eo.

Lalae waini ŋe!



Ke waini eo eaar bojak in tōbar laļ, baru eo eaar buul im deloñ iloan juon roñ.

Baru eo eaar koᅇ im aineman.



Eaar juon raan eo eaitok n̄an baru eo. Ejjab etto eaar ʄoe juon jikin eo eṃṃan im etoʄok jen kauōtata. Ilo tōrein, eaar aineman ilo rōñ eo jikin ilo bok ko.

This book is part of a series of Pacific language early readers developed by Pacific Resources for Education and Learning (PREL).

We would like to thank the following people for their assistance in developing this set of early reading materials.

Acknowledgements

Marshallese

Translated by: Hannah Lafita

Reviewed by: Enion Kalles

English

Author: Lee Noto

Illustrator: Lori Phillips



Pacific Resources for Education and Learning

900 Fort Street Mall Suite 1300 Honolulu, Hawai'i 96813

Phone: (808) 441-1300 Fax: (808) 441-1385

U.S. Toll-free Phone: (800) 377-4773

U.S. Toll-free Fax: (888) 512-7599

Email: askprel@prel.org Website: www.prel.org

Building Capacity Through Education

This product was funded by the U.S. Department of Education (U.S. ED) under the Regional Educational Laboratory program, award number ED01CO0014. The content does not necessarily reflect the views of the U.S. ED or any other agency of the U.S. government.

© copyright PREL 2006