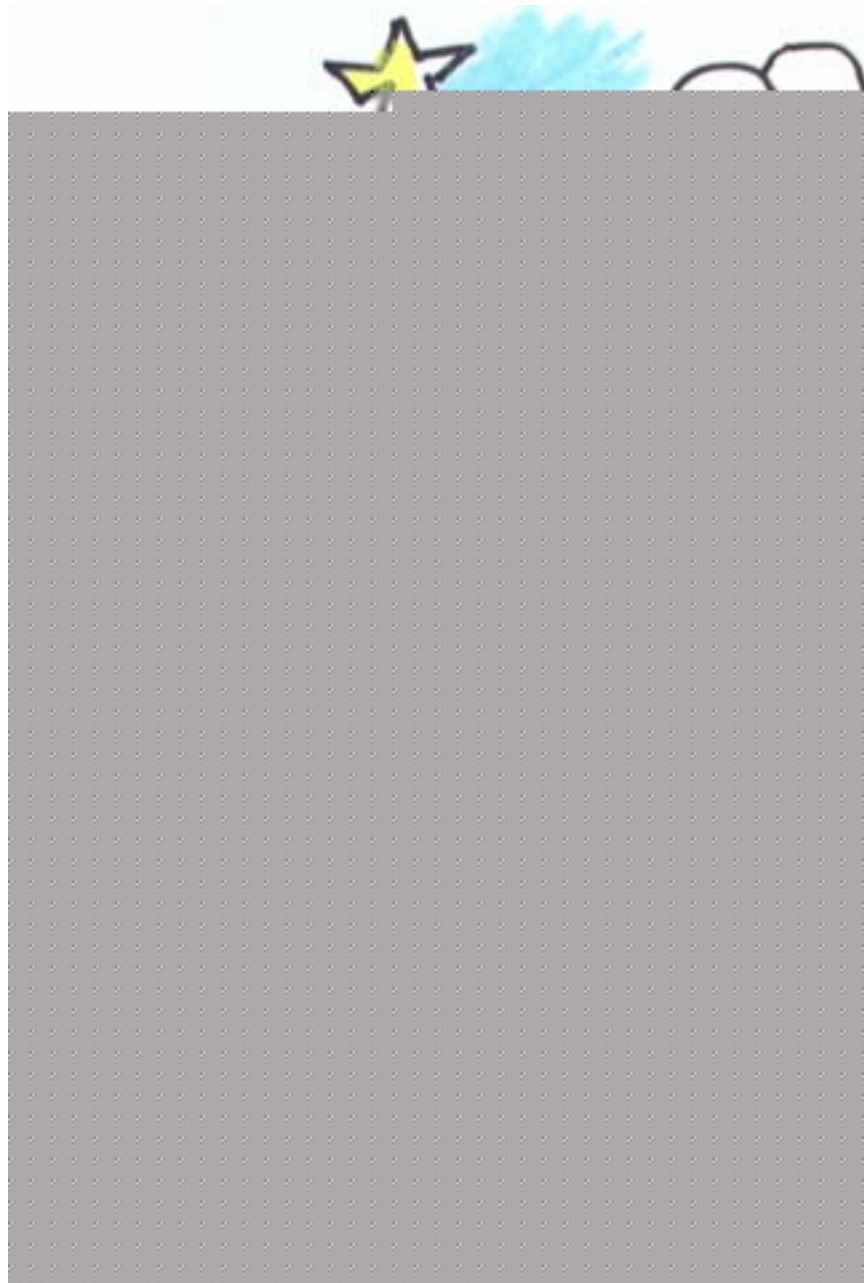


Som Nuh Lohm Ah Pik Srihsrihk



Sihmlac sel: Lee Noto
Sroleyclac sel: Lori Phillips

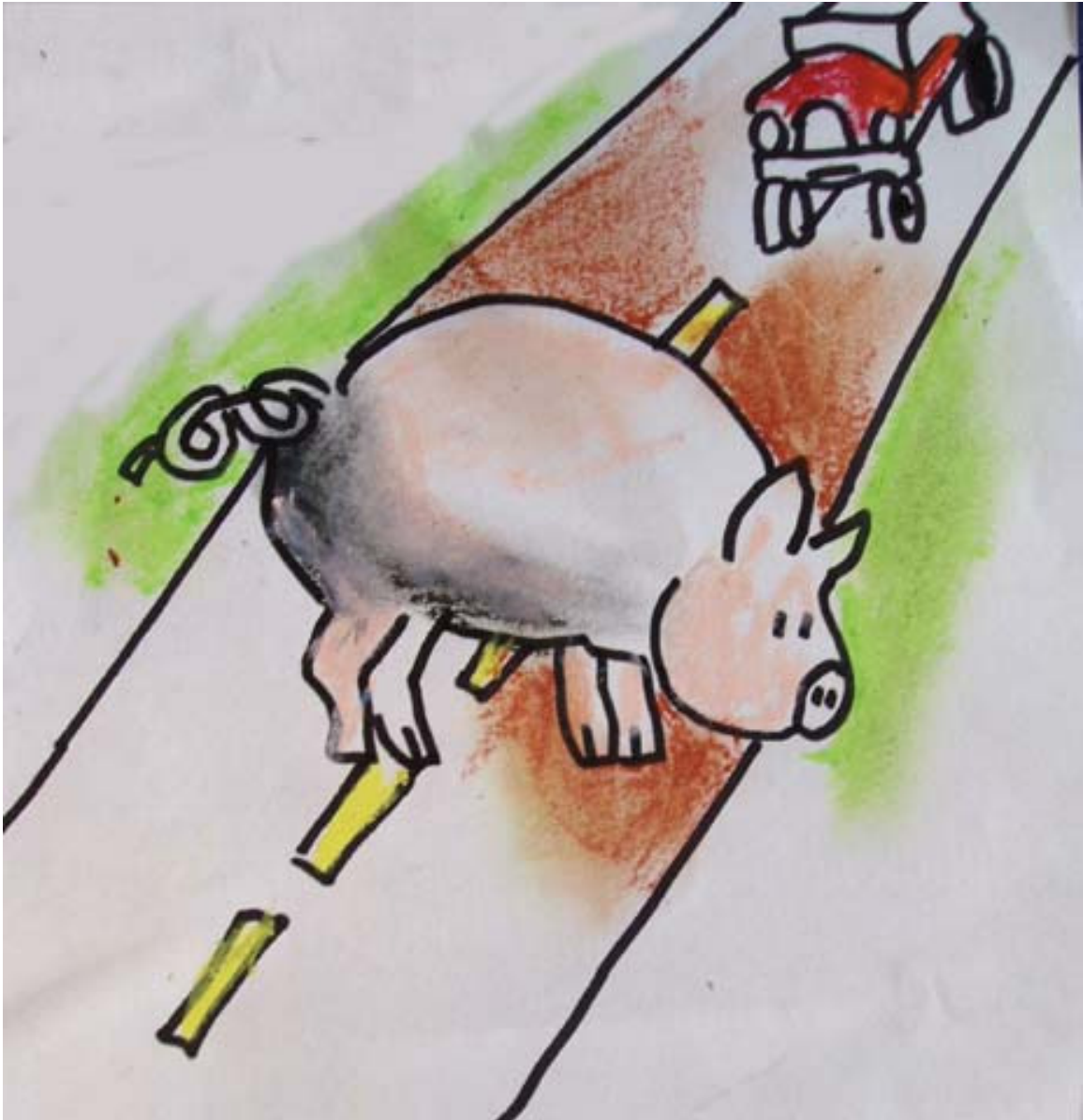


Pik Srihsrihk el ke muhtwacta.

“Nimet som loes liki lohm ah,” ninac kiaci ah fahk.

Pik Srihsrihk el som apkuhran nuh ke lutlut ac.

“Som nuh lohm ah Pik Srihsrihk, som nuh lohm ah.”



Pik Srihsrihk el som nuh ke inkacnek ah.

“Som nuh lohm ah Pik Srihsrihk, som nuh lohm ah.”



Pik Srihsrihk el som apkuhran nuh in kof ah.

“Som nuh lohm ah Pik Srihsrihk, som nuh lohm ah.”



Pik Srihsrihk el som apkuhran nuh ke kosro lwemnak ah.

“Som nuh lohm ah Pik Srihsrihk, som nuh lohm ah.”



Pik Srihsrihk el fahk, "Pacl wo in fohlohk nuh lohman."
ah."

Ninac kiagl ah fahk...



“Fahsruh nuh loh ah Pik Srihsrihk, fahsruh nuh loh ah.”

This book is part of a series of Pacific language early readers developed by Pacific Resources for Education and Learning (PREL).

We would like to thank the following people for their assistance in developing this set of early reading materials.

Acknowledgements

Kosraean

Translated by: Winton Clarence and Keti Williams

Reviewed by: Winton Clarence and Keti Williams

English

Author: Lee Noto

Illustrator: Lori Phillips



Pacific Resources for Education and Learning

900 Fort Street Mall Suite 1300 Honolulu, Hawai'i 96813

Phone: (808) 441-1300 Fax: (808) 441-1385

U.S. Toll-free Phone: (800) 377-4773

U.S. Toll-free Fax: (888) 512-7599

Email: askprel@prel.org Website: www.prel.org

Building Capacity Through Education

This product was funded by the U.S. Department of Education (U.S. ED) under the Regional Educational Laboratory program, award number ED01CO0014. The content does not necessarily reflect the views of the U.S. ED or any other agency of the U.S. government.

© copyright PREL 2006