

Túmwúnúech Umwoumw



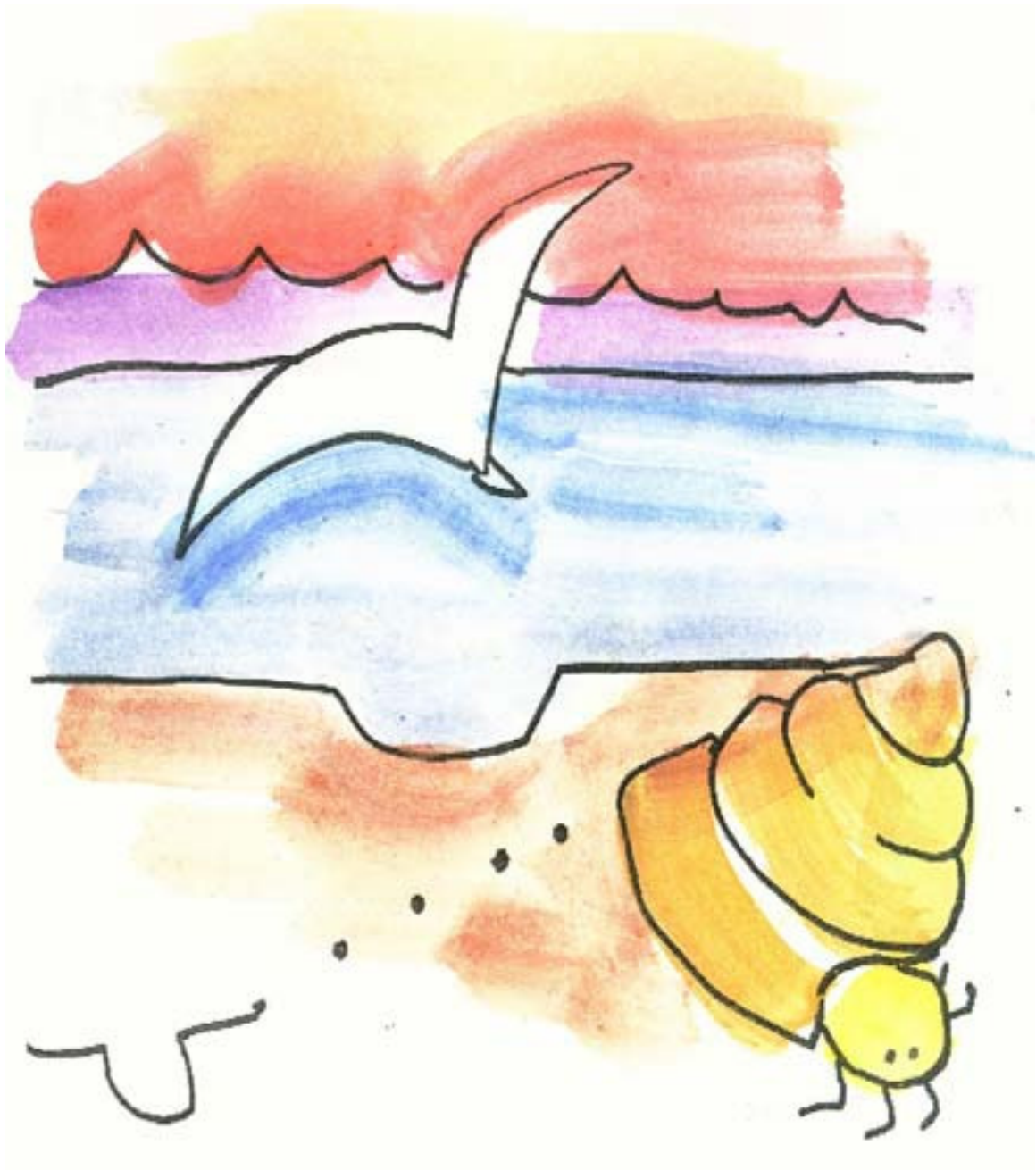
Makkean: Lee Noto
Chúnganien: Lori Phillips



Uwoumw aa téetá me téetiw wóón ewe pi. Aa kan toonong me toou nón ekkewe pwaangen pi.



Emén watten machchang aa ásito. Aa men fókun echik. Aa kan ekkekik. Iká upwe ekis witiwit, epwe wor enei mwéngéén neanowas mei anné.



Umwoumw aa tou me nón ewe pwaang. Aa téété fetán wóón ewe pi. Umwoumw ese kúna ewe machchang pwe aa ásito asen mékúran. Machchang aa éúréúreno changetiw asen mékúren Umwoumw.

TUMWUNUUK UMWOUMW!



Umwoumw aa sáiti eew pwaang iwe oturaanong nón.
Ewe machchang aa neetipengngaw iwe aa changenó.
Umwoumw ese feiengngaw.



Umwoumw aa tóóu seni ewe pwaang, iwe aa téété
fetán arrosset, ese mwo ekiem ewe watten nóó epwe
ne núnoong.

Túmwúnúéch Umwoumw!



Nupwen chék ewe nóó aa pùngùnong arosset, nge
Umoumw aa mwittir chék sáánong nón ewe
pwaangen pi.

Umwoumw aa manaw, ese feiengngaw.



Umwoumw aa tou me nón ewe pwaang, iwe aa pwan téété fetán wóón ewe pi, nge ese tepereni pwe ewe taka epwe ne mworetiw seni wóón ewe núú.

Túmwúnuuk Umwoumw!



Nupwen ewe taka aa turutiw wóón ewe pi, Umwoumw
aa mwittir sáánong nón ewe pwaangen pi.

Umwoumw ewe feiengngaw.



Eew raan mei fókkun aweires ngeni Umwoumw, nge ekisenó chék aa kúna eew neenian mei ekinamwe mii toowaw seni neeni mei efeiengngaw. Umwoumw aa ngasenó me nón neenian we pwaang wóón ewe pi.

This book is part of a series of Pacific language early readers developed by Pacific Resources for Education and Learning (PREL).

We would like to thank the following people for their assistance in developing this set of early reading materials.

Acknowledgements

Chuukese

Translated by: Takaichy Souleng

Reviewed by: Keres Petrus

English

Author: Lee Noto

Illustrator: Lori Phillips



Pacific Resources for Education and Learning

900 Fort Street Mall Suite 1300 Honolulu, Hawai'i 96813

Phone: (808) 441-1300 Fax: (808) 441-1385

U.S. Toll-free Phone: (800) 377-4773

U.S. Toll-free Fax: (888) 512-7599

Email: askprel@prel.org Website: www.prel.org

Building Capacity Through Education

This product was funded by the U.S. Department of Education (U.S. ED) under the Regional Educational Laboratory program, award number ED01CO0014. The content does not necessarily reflect the views of the U.S. ED or any other agency of the U.S. government.

© copyright PREL 2006