

Ubwe ghal afellúgh schagh Umwál



Ischiiyal: Lee Noto
Zunguwáliyal: Lori Phillips



Umwál we aa tettelawtá me tettelawtiw leppi. Igha e ghal tettelaw nge eghal ghelengilong me ghelengiwow ngaat mewóól ppi.



Tómwoghol paluma e yálletiw mwoschengei sáát.
Nge umwál we aa ghi soong. Paluma yeel eghal
amwuri umwál we igha e ghal toolong me toowow
mellól ngatal. E ghal mengi bwe ngare e bwungi yaal
amwuri umwál yeel nge emmwel ebwe ghi ghatch
yaal mwungo láluwas.

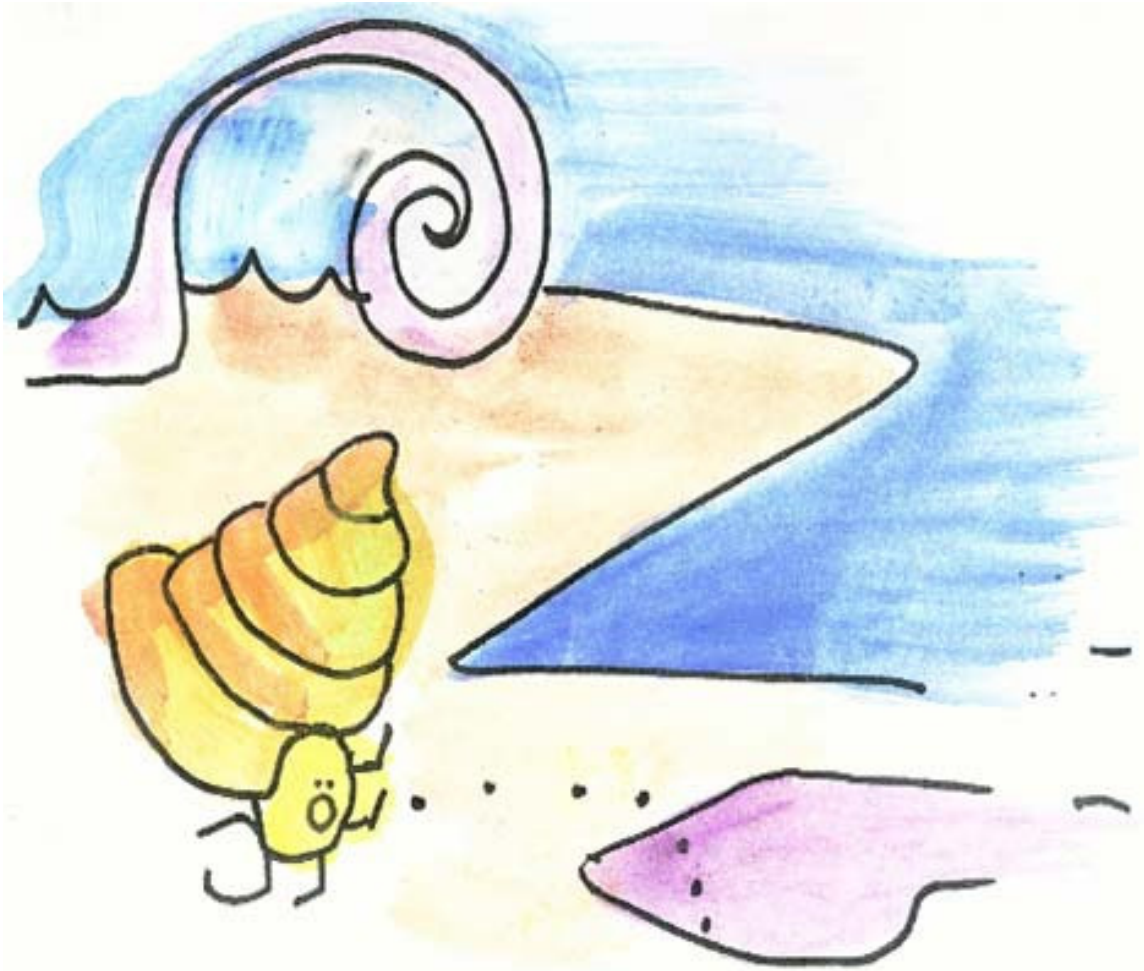


Umwál we aa toowow mellól ngatal aa ghal tettelaw wóól mwoschengei sáát. Ese uri tómwoghol paluma we wóól. Paluma we e ghi keyil yálletiw wóól umwál we nge aa ira, **“Afellúgh schagh umwál!”**



Umwál we aa fattabwelong llól ngaat. Paluma we ese
ghi meseigh nge aa yálló.

Umwál we aa malaw.



Umwál we aa bwal tettelaw wow leppi. Nge ese ghuley bwe tómwoghol ló ebwele sowaló wóól mwoschengei sáát.

Afellúgh umwál!



Igha ebwele lléschetá ló we nge umwál aa bwal
fatabwelong llól ngatal.
Iwe aa bwal malaw umwál.



Umwál aa bwal tettelaw leppi. Nge ese uri tómwoghol schoo ebwele pungutiw wóól.

Affellúgh Umwál!



Igha ebwele pungutiw schoo we wóól, Umwál we aa bwal ghi fattabwelong llól ngatal. Umwál aa bwal melaw.



E ghi weires llól ráálil yeel ngeli umwál. Nge ese mwey nge umwál aa schuungi bwuley ye ebwe tau-sengi mil amasagh. Aa ghilamwey llól ngaat we ngatal.

This book is part of a series of Pacific language early readers developed by Pacific Resources for Education and Learning (PREL).

We would like to thank the following people for their assistance in developing this set of early reading materials.

Acknowledgements

Carolinian

**Translated by: Jesus M. Elameto
Reviewed by: Francisca L. Kapileo**

English

**Author: Lee Noto
Illustrator: Lori Phillips**



Pacific Resources for Education and Learning

900 Fort Street Mall Suite 1300 Honolulu, Hawai'i 96813

Phone: (808) 441-1300 Fax: (808) 441-1385

U.S. Toll-free Phone: (800) 377-4773

U.S. Toll-free Fax: (888) 512-7599

Email: askprel@prel.org Website: www.prel.org

Building Capacity Through Education

This product was funded by the U.S. Department of Education (U.S. ED) under the Regional Educational Laboratory program, award number ED01CO0014. The content does not necessarily reflect the views of the U.S. ED or any other agency of the U.S. government.

© copyright PREL 2006

